

Anti-ARHGDI A Rabbit Polyclonal Antibody

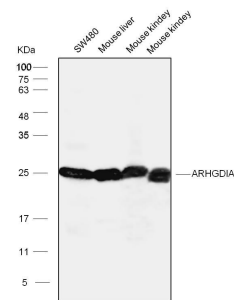
Cat: AC51284

Basic information

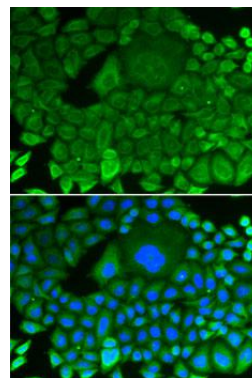
Source: Rabbit**Swiss Prot:** P52565**Species reactivity:** human,mouse,rat,Monkey**Gene ID:** 396**Isotype:** IgG**Tested applications:** WB IF**Purification:** Affinity purification**Immunogen:** A synthetic peptide of human ARHGDI A**MW(kDa):**23kDa**Storage:** Shipped at 4°C. Upon delivery aliquot and store at -20°C. Avoid freeze / thaw cycles.

Background:

This gene encodes a protein that plays a key role in the regulation of signaling through Rho GTPases. The encoded protein inhibits the disassociation of Rho family members from GDP (guanine diphosphate), thereby maintaining these factors in an inactive state. Activity of this protein is important in a variety of cellular processes, and expression of this gene may be altered in tumors. Mutations in this gene have been found in individuals with nephrotic syndrome, type 8. Alternate splicing results in multiple transcript variants.



Western blot analysis with anti-ARHGDI A Rabbit Polyclonal Antibody diluted at 1:1,000



Immunofluorescence analysis of HeLa cells using RhoGDI antibody diluted at 1:100.