

Anti-STIP1 Polyclonal Antibody

Cat: AC51304

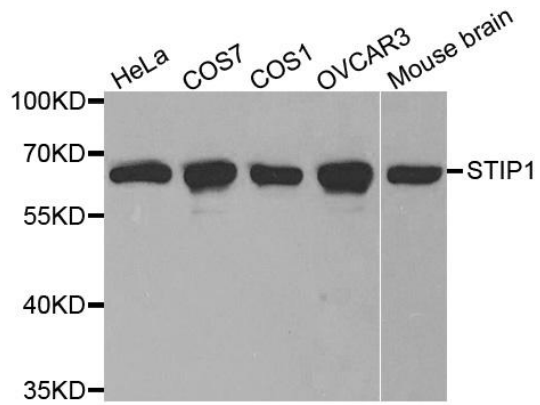
Summary:

- 【Product name】** : Anti-STIP1 antibody **【Source】** : Rabbit
【Isotype】 : IgG **【Species reactivity】** : Human Mouse Monkey
【Swiss Prot】 : P31948 **【Gene ID】** : 10963
【Calculated】 : MW:63kDa **【Observed】** : MW:35kDa
【Purification】 : Affinity purification
【Tested applications】 : WB, IHC, IF
【Recommended dilution】 : WB 1:500-2000. IHC 1:50-200. IF 1:50-200.
【WB Positive sample】 : HeLa,COS7,COS1,OVCAR3,Mouse brain
【IHC Positive sample】 : Rat lung tissue
【Subcellular location】 : Cytoplasm Nucleus
【Immunogen】 : Recombinant protein of human STIP1
【Storage】 : Shipped at 4°C. Upon delivery aliquot and store at -20°C

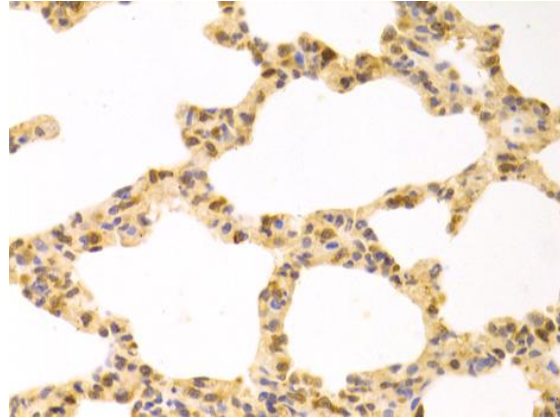
Background:

STIP1 is an adaptor protein that coordinates the functions of HSP70 (see HSPA1A; MIM 140550) and HSP90 (see HSP90AA1; MIM 140571) in protein folding. It is thought to assist in the transfer of proteins from HSP70 to HSP90 by binding both HSP90 and substrate-bound HSP70. STIP1 also stimulates the ATPase activity of HSP70 and inhibits the ATPase activity of HSP90, suggesting that it regulates both the conformations and ATPase cycles of these chaperones (Song and Masison, 2005 [PubMed 16100115]).

Verified picture



Western blot analysis with STIP1 antibody diluted at 1:1000



Immunohistochemistry of paraffin-embedded Rat lung tissue with STIP1 antibody diluted at 1:100