

## Anti-ATL3 Polyclonal Antibody

Cat: AC51306

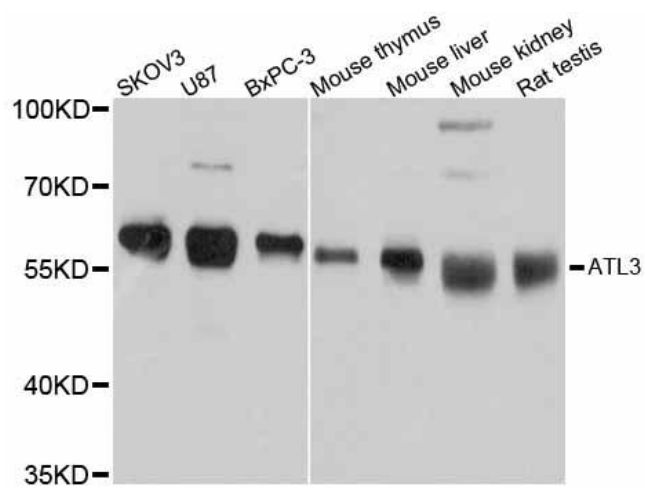
### Summary:

- 【Product name】** : Anti-ATL3 antibody      **【Source】** : Rabbit  
**【Isotype】** : IgG      **【Species reactivity】** : Human Mouse Rat  
**【Swiss Prot】** : Q6DD88      **【Gene ID】** : 25923  
**【Calculated】** : MW:61kDa      **【Observed】** : MW:63kDa  
**【Purification】** : Affinity purification  
**【Tested applications】** : WB  
**【Recommended dilution】** : WB 1:500-2000.  
**【WB Positive sample】** : SKOV3,U87,BXPC-3,Mouse thymus,Mouse liver,Mouse kidney,Rat testis  
**【Subcellular location】** : Endoplasmic reticulum membrane Multi-pass membrane protein  
**【Immunogen】** : Recombinant protein of human ATL3  
**【Storage】** : Shipped at 4°C. Upon delivery aliquot and store at -20°C

### Background:

This gene encodes a member of a family of dynamin-like, integral membrane GTPases. The encoded protein is required for the proper formation of the network of interconnected tubules of the endoplasmic reticulum. Mutations in this gene may be associated with hereditary sensory neuropathy type IF. Alternatively spliced transcript variants that encode distinct isoforms have been described.

## Verified picture



Western blot analysis with ATL3 antibody  
diluted at 1:1000