

## Anti-CST8 Polyclonal Antibody

Cat: AC51318

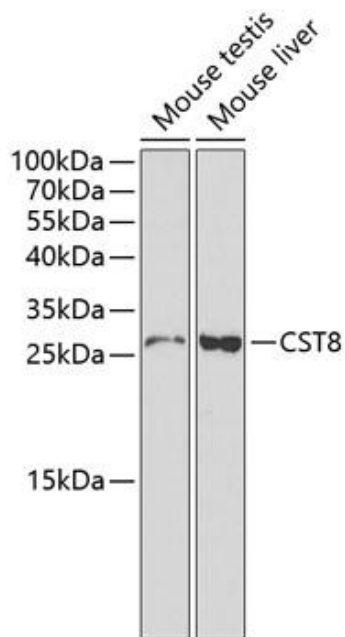
### Summary:

- 【Product name】** : Anti-CST8 antibody      **【Source】** : Rabbit  
**【Isotype】** : IgG      **【Species reactivity】** : Human Mouse  
**【Swiss Prot】** : O60676      **【Gene ID】** : 10047  
**【Calculated】** : MW:16kDa      **【Observed】** : MW:28kDa  
**【Purification】** : Affinity purification  
**【Tested applications】** : WB, IF  
**【Recommended dilution】** : WB 1:500-2000. IF 1:50-200.  
**【WB Positive sample】** : Mouse testis, Mouse liver  
**【IF Positive sample】** : HELA cell  
**【Subcellular location】** : Secreted  
**【Immunogen】** : Recombinant protein of human CST8  
**【Storage】** : Shipped at 4°C. Upon delivery aliquot and store at -20°C

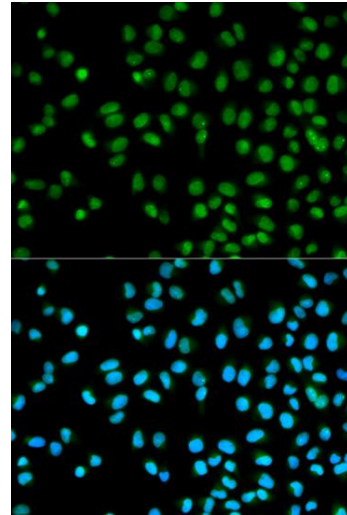
### Background:

The cystatin superfamily encompasses proteins that contain multiple cystatin-like sequences. Some of the members are active cysteine protease inhibitors, while others have lost or perhaps never acquired this inhibitory activity. There are three inhibitory families in the superfamily, including the type 1 cystatins (stefins), type 2 cystatins and the kininogens. The type 2 cystatin proteins are a class of cysteine proteinase inhibitors found in a variety of human fluids and secretions. The cystatin locus on chromosome 20 contains the majority of the type 2 cystatin genes and pseudogenes. This gene is located in the cystatin locus and encodes a protein similar to type 2 cystatins. The encoded protein exhibits highly tissue-specific expression in the reproductive tract, suggesting implicit roles in reproduction. Alternative splicing results in multiple transcript variants.

## Verified picture



Western blot analysis with CST8 antibody diluted at 1:1000



Immunofluorescence analysis of HELA cells using CST8 antibody diluted at 1:100.