

## Anti-ALDH2 Polyclonal Antibody

Cat: AC51322

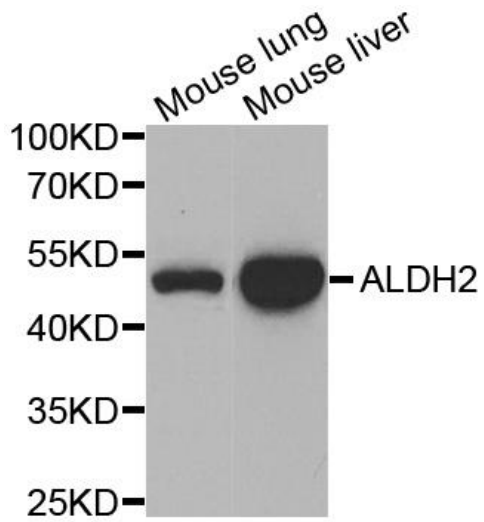
### Summary:

- 【Product name】** : Anti-ALDH2 antibody      **【Source】** : Rabbit  
**【Isotype】** : IgG      **【Species reactivity】** : Human Mouse Rat  
**【Swiss Prot】** : P05091      **【Gene ID】** : 217  
**【Calculated】** : MW:56kDa      **【Observed】** : MW:50kDa  
**【Purification】** : Affinity purification  
**【Tested applications】** : WB, IHC, IF  
**【Recommended dilution】** : WB 1:500-2000. IHC 1:50-200. IF 1:50-200.  
**【WB Positive sample】** : Mouse lung, Mouse liver  
**【IHC Positive sample】** : Rat live tissue  
**【Subcellular location】** : Mitochondrion matrix  
**【Immunogen】** : Recombinant protein of human ALDH2  
**【Storage】** : Shipped at 4°C. Upon delivery aliquot and store at -20°C

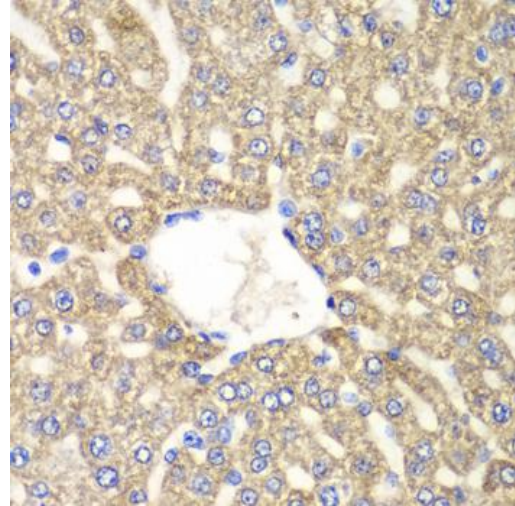
### Background:

This protein belongs to the aldehyde dehydrogenase family of proteins. Aldehyde dehydrogenase is the second enzyme of the major oxidative pathway of alcohol metabolism. Two major liver isoforms of aldehyde dehydrogenase, cytosolic and mitochondrial, can be distinguished by their electrophoretic mobilities, kinetic properties, and subcellular localizations. Most Caucasians have two major isozymes, while approximately 50% of East Asians have the cytosolic isozyme but not the mitochondrial isozyme. A remarkably higher frequency of acute alcohol intoxication among East Asians than among Caucasians could be related to the absence of a catalytically active form of the mitochondrial isozyme. The increased exposure to acetaldehyde in individuals with the catalytically inactive form may also confer greater susceptibility to many types of cancer. This gene encodes a mitochondrial isoform, which has a low  $K_m$  for acetaldehydes, and is localized in mitochondrial matrix. Alternative splicing results in multiple transcript variants encoding distinct isoforms.

## Verified picture



Western blot analysis with ALDH2 antibody  
diluted at 1:1000



Immunohistochemistry of paraffin-embedded  
Rat live tissue with ALDH2 antibody diluted at  
1:100