

Anti-IGF1 Polyclonal Antibody

Cat: AC51332

Summary:

【Product name】 : Anti-IGF1 antibody

【Source】 : Rabbit

【Isotype】 : IgG

【Species reactivity】 : Human Mouse Rat

【Swiss Prot】 : P05019

【Gene ID】 : 3479

【Calculated】 : MW: 22/17/15/18kDa

【Observed】 : MW:18kDa

【Purification】 : Affinity purification

【Tested applications】 : WB

【Recommended dilution】 : WB 1:500-2000.

【WB Positive sample】 : U-87MG,LO2,SKOV3,HeLa,Mouse liver,Mouse testis,Mouse brain,Rat testis

【Subcellular location】 : Secreted

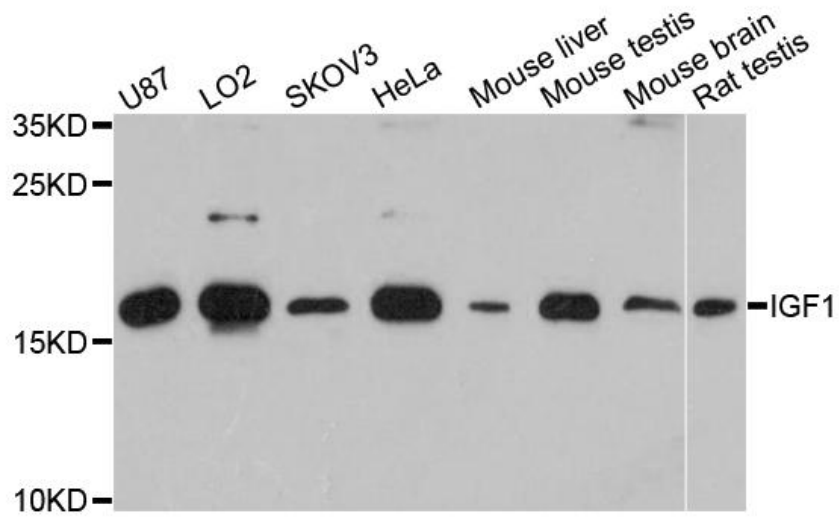
【Immunogen】 : A synthetic peptide of human IGF1

【Storage】 : Shipped at 4°C. Upon delivery aliquot and store at -20°C

Background:

The protein encoded by this gene is similar to insulin in function and structure and is a member of a family of proteins involved in mediating growth and development. The encoded protein is processed from a precursor, bound by a specific receptor, and secreted. Defects in this gene are a cause of insulin-like growth factor I deficiency. Alternative splicing results in multiple transcript variants encoding different isoforms that may undergo similar processing to generate mature protein.

Verified picture



Western blot analysis with IGF1 antibody diluted at 1:1000