

# Anti-CDC20 Rabbit Polyclonal Antibody

Cat:AC51333

## Basic information

**Source:** Rabbit

**Species reactivity:** Human

**Isotype:** IgG

**Purification:** Affinity purification

**MW(kDa):**55kDa

### Background:

CDC20 appears to act as a regulatory protein interacting with several other proteins at multiple points in the cell cycle. It is required for two microtubule-dependent processes, nuclear movement prior to anaphase and chromosome separation.

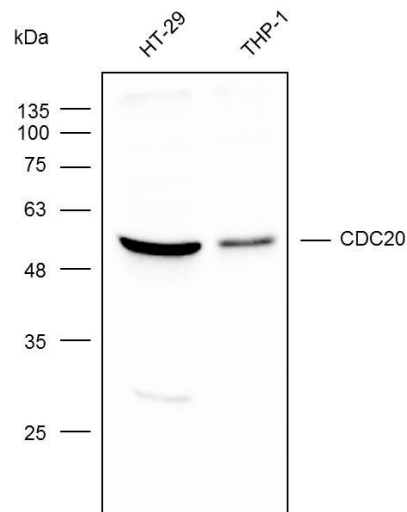
**Swiss Prot:**Q12834

**Gene ID:**991

**Tested applications:** WB

**Immunogen:**Recombinant protein of human CDC20

**Storage:** Store at -20°C. Avoid freeze / thaw cycles.  
**Buffer:** PBS with 0.02% sodium azide, 50% glycerol, pH7.3.



Western blot analysis with K002505P diluted at 1:1,000