

## Anti-B2M Polyclonal Antibody

Cat: AC51357

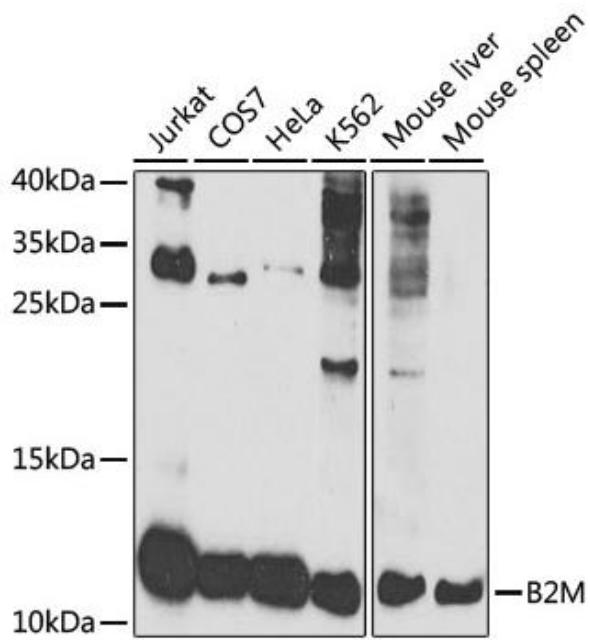
### Summary:

- 【Product name】** : Anti-B2M antibody      **【Source】** : Rabbit  
**【Isotype】** : IgG      **【Species reactivity】** : Human Mouse Rat Monkey  
**【Swiss Prot】** : P61769      **【Gene ID】** : 567  
**【Calculated】** : MW:14kDa      **【Observed】** : MW:12kDa  
**【Purification】** : Affinity purification  
**【Tested applications】** : WB, IHC, IP  
**【Recommended dilution】** : WB 1:500-2000. IHC 1:50-200. IP 1:50-100.  
**【WB Positive sample】** : Jurkat,COS7,HeLa,K-562,Mouse liver,Mouse spleen  
**【IHC Positive sample】** : Rat brain tissue  
**【Subcellular location】** : Secreted  
**【Immunogen】** : Recombinant protein of human B2M  
**【Storage】** : Shipped at 4°C. Upon delivery aliquot and store at -20°C

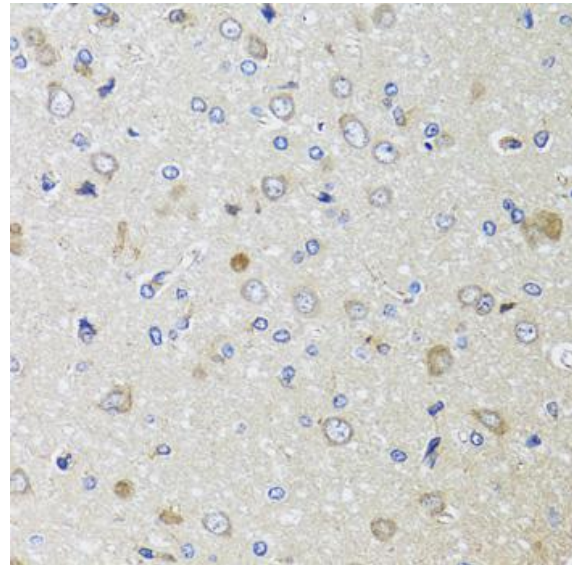
### Background:

This gene encodes a serum protein found in association with the major histocompatibility complex (MHC) class I heavy chain on the surface of nearly all nucleated cells. The protein has a predominantly beta-pleated sheet structure that can form amyloid fibrils in some pathological conditions. The encoded antimicrobial protein displays antibacterial activity in amniotic fluid. A mutation in this gene has been shown to result in hypercatabolic hypoproteinemia.

## Verified picture



Western blot analysis with B2M antibody diluted at 1:1000



Immunohistochemistry of paraffin-embedded Rat brain tissue with B2M antibody diluted at 1:100