

Anti-PI3 Polyclonal Antibody

Cat: AC51393

Summary:

【Product name】 : Anti-PI3 antibody

【Source】 : Rabbit

【Isotype】 : IgG

【Species reactivity】 : Human Rat

【Swiss Prot】 : P19957

【Gene ID】 : 5266

【Calculated】 : MW:12kDa

【Purification】 : Affinity purification

【Tested applications】 : WB IHC

【Recommended dilution】 : WB 1:500-2000. IHC 1:50-200.

【IHC Positive sample】 : Rat lung tissue

【Subcellular location】 : Secreted

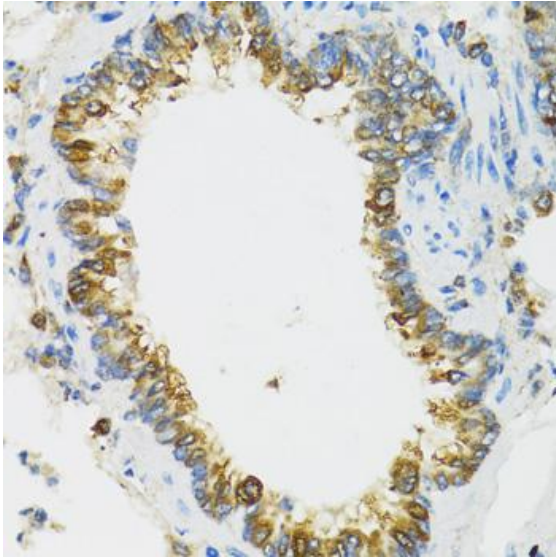
【Immunogen】 : Recombinant protein of human PI3

【Storage】 : Shipped at 4°C. Upon delivery aliquot and store at -20°C

Background:

This gene encodes an elastase-specific inhibitor that functions as an antimicrobial peptide against Gram-positive and Gram-negative bacteria, and fungal pathogens. The protein contains a WAP-type four-disulfide core (WFDC) domain, and is thus a member of the WFDC domain family. Most WFDC gene members are localized to chromosome 20q12-q13 in two clusters: centromeric and telomeric. This gene belongs to the centromeric cluster. Expression of this gene is upregulated by bacterial lipopolysaccharides and cytokines.

Verified picture



Immunohistochemistry of paraffin-embedded
Rat lung tissue with PI3 antibody diluted at
1:100