

Anti-SUMO1 Polyclonal Antibody

Cat: AC51413

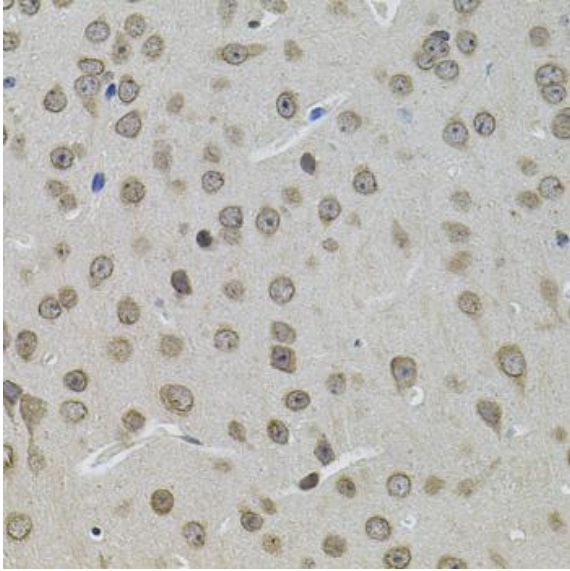
Summary:

- | | |
|---|---|
| 【Product name】 : Anti-SUMO1 antibody | 【Source】 : Rabbit |
| 【Isotype】 : IgG | 【Species reactivity】 : Human Mouse |
| 【Swiss Prot】 : P63165 | 【Gene ID】 : 7341 |
| 【Calculated】 : MW:12/9kDa | 【Observed】 : MW: |
| 【Purification】 : Affinity purification | |
| 【Tested applications】 : IHC IF | |
| 【Recommended dilution】 : IHC 1:50-200. IF 1:50-200. | |
| 【IHC Positive sample】 : Mouse brain tissue | |
| 【Subcellular location】 : Cell membrane Cytoplasm Nucleus | |
| 【Immunogen】 : Recombinant protein of human SUMO1 | |
| 【Storage】 : Shipped at 4°C. Upon delivery aliquot and store at -20°C | |

Background:

This gene encodes a protein that is a member of the SUMO (small ubiquitin-like modifier) protein family. It functions in a manner similar to ubiquitin in that it is bound to target proteins as part of a post-translational modification system. However, unlike ubiquitin which targets proteins for degradation, this protein is involved in a variety of cellular processes, such as nuclear transport, transcriptional regulation, apoptosis, and protein stability. It is not active until the last four amino acids of the carboxy-terminus have been cleaved off. Several pseudogenes have been reported for this gene. Alternate transcriptional splice variants encoding different isoforms have been characterized.

Verified picture



Immunohistochemistry of paraffin-embedded
Mouse brain tissue with SUMO1 antibody
diluted at 1:100