

Anti-MARVELD2 Polyclonal Antibody

Cat: AC51442

Summary:

【 Product name 】 : Anti-MARVELD2 **【Source】** : Rabbit
antibody

【Isotype】 : IgG **【Species reactivity】** : Human Rat

【Swiss Prot】 : Q8N4S9 **【Gene ID】** : 153562

【Calculated】 : MW:64kDa **【Observed】** : MW:70/85kDa

【Purification】 : Affinity purification

【Tested applications】 : WB

【Recommended dilution】 : WB 1:500-2000.

【WB Positive sample】 : HT-29,A549,Mouse kidney

【Subcellular location】 : Cell junction Cell membrane Multi-pass membrane protein tight junction

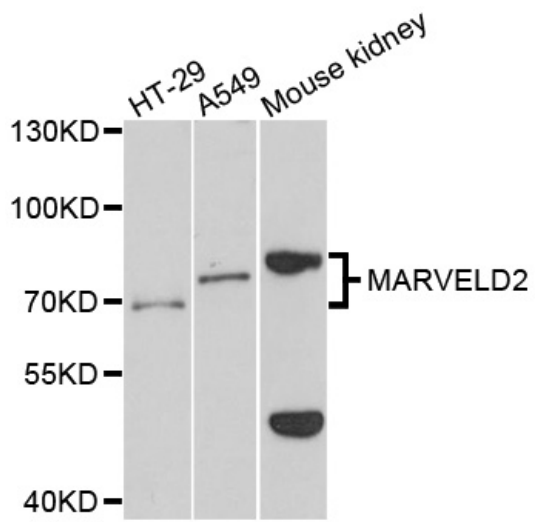
【Immunogen】 : Recombinant protein of human MARVELD2

【Storage】 : Shipped at 4°C. Upon delivery aliquot and store at -20°C

Background:

The protein encoded by this gene is a membrane protein found at the tight junctions between epithelial cells. The encoded protein helps establish epithelial barriers such as those in the organ of Corti, where these barriers are required for normal hearing. Defects in this gene are a cause of deafness autosomal recessive type 49 (DFNB49). Two transcript variants encoding different isoforms have been found for this gene.

Verified picture



Western blot analysis with MARVELD2
antibody diluted at 1:1000