

## Anti-CAV3 Polyclonal Antibody

Cat: AC51469

### Summary:

**【Product name】** : Anti-CAV3 antibody

**【Source】** : Rabbit

**【Isotype】** : IgG

**【Species reactivity】** : Mouse Rat

**【Swiss Prot】** : P56539

**【Gene ID】** : 859

**【Calculated】** : MW:17kDa

**【Observed】** : MW:18kDa

**【Purification】** : Affinity purification

**【Tested applications】** : WB

**【Recommended dilution】** : WB 1:500-2000.

**【WB Positive sample】** : Mouse heart,Rat skeletal muscle,Rat heart

**【Subcellular location】** : Cell membrane Golgi apparatus membrane Membrane Peripheral membrane protein caveola

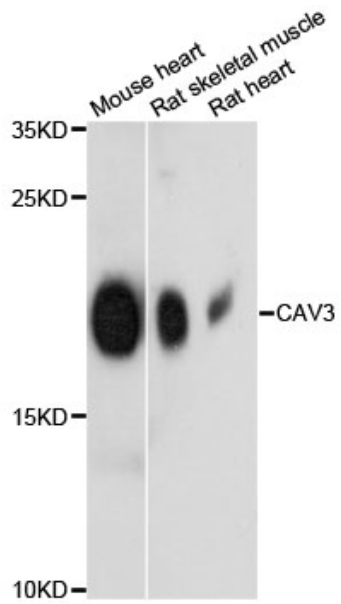
**【Immunogen】** : A synthetic peptide of human CAV3

**【Storage】** : Shipped at 4°C. Upon delivery aliquot and store at -20°C

### Background:

This gene encodes a caveolin family member, which functions as a component of the caveolae plasma membranes found in most cell types. Caveolin proteins are proposed to be scaffolding proteins for organizing and concentrating certain caveolin-interacting molecules. Mutations identified in this gene lead to interference with protein oligomerization or intra-cellular routing, disrupting caveolae formation and resulting in Limb-Girdle muscular dystrophy type-1C (LGMD-1C), hyperCKemia or rippling muscle disease (RMD). Alternative splicing has been identified for this locus, with inclusion or exclusion of a differentially spliced intron. In addition, transcripts utilize multiple polyA sites and contain two potential translation initiation sites.

## Verified picture



Western blot analysis with CAV3 antibody  
diluted at 1:1000