

Anti-CRYZ Polyclonal Antibody

Cat: AC51489

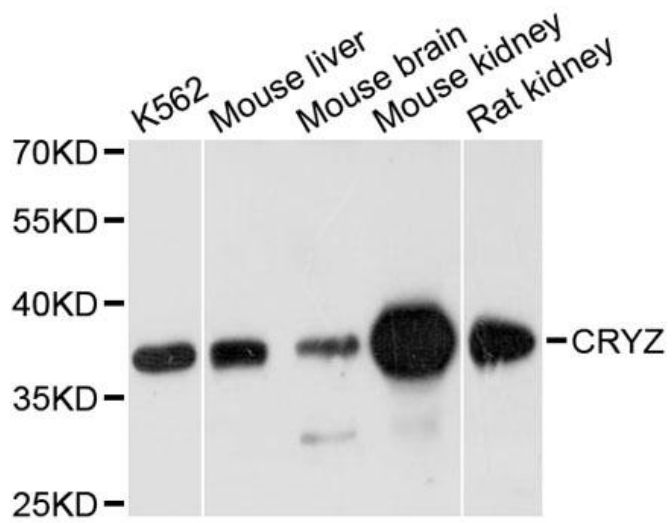
Summary:

- 【Product name】** : Anti-CRYZ antibody **【Source】** : Rabbit
【Isotype】 : IgG **【Species reactivity】** : Human Mouse Rat
【Swiss Prot】 : Q08257 **【Gene ID】** : 1429
【Calculated】 : MW:35kDa **【Observed】** : MW:37kDa
【Purification】 : Affinity purification
【Tested applications】 : WB
【Recommended dilution】 : WB 1:500-2000.
【WB Positive sample】 : K562,Mouse liver,Mouse brain,Mouse kidney,Rat kidney
【Subcellular location】 : Cytoplasm
【Immunogen】 : Recombinant protein of human CRYZ
【Storage】 : Shipped at 4°C. Upon delivery aliquot and store at -20°C

Background:

Crystallins are separated into two classes: taxon-specific, or enzyme, and ubiquitous. The latter class constitutes the major proteins of vertebrate eye lens and maintains the transparency and refractive index of the lens. The former class is also called phylogenetically-restricted crystallins. This gene encodes a taxon-specific crystallin protein which has NADPH-dependent quinone reductase activity distinct from other known quinone reductases. It lacks alcohol dehydrogenase activity although by similarity it is considered a member of the zinc-containing alcohol dehydrogenase family. Unlike other mammalian species, in humans, lens expression is low. Alternatively spliced transcript variants encoding different isoforms have been found for this gene. One pseudogene is known to exist.

Verified picture



Western blot analysis with CRYZ antibody
diluted at 1:1000