

## Anti-FKBP10 Polyclonal Antibody

Cat: AC51503

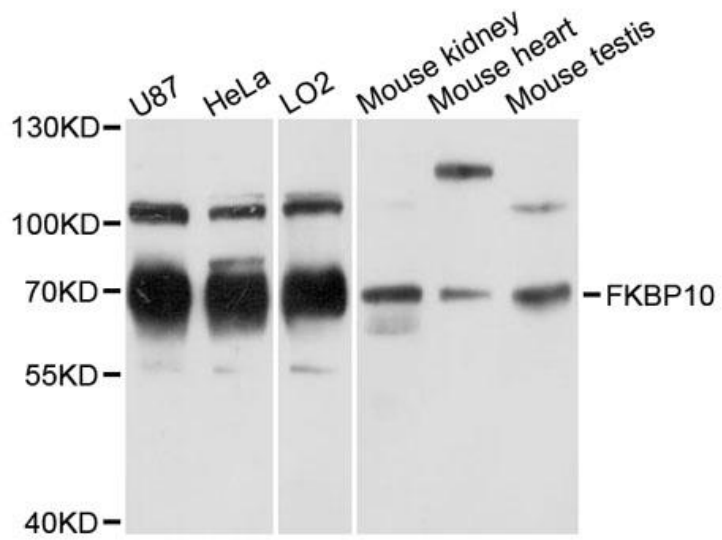
### Summary:

- 【Product name】** : Anti-FKBP10 antibody      **【Source】** : Rabbit  
**【Isotype】** : IgG      **【Species reactivity】** : Human Mouse  
**【Swiss Prot】** : Q96AY3      **【Gene ID】** : 60681  
**【Calculated】** : MW:64kDa      **【Observed】** : MW:70kDa  
**【Purification】** : Affinity purification  
**【Tested applications】** : WB  
**【Recommended dilution】** : WB 1:500-2000.  
**【WB Positive sample】** : U-87,HeLa,LO2,Mouse kidney,Mouse heart,Mouse testis  
**【Subcellular location】** : Endoplasmic reticulum lumen  
**【Immunogen】** : Recombinant protein of human FKBP10  
**【Storage】** : Shipped at 4°C. Upon delivery aliquot and store at -20°C

### Background:

The protein encoded by this gene belongs to the FKBP-type peptidyl-prolyl cis/trans isomerase (PPIase) family. This protein localizes to the endoplasmic reticulum and acts as a molecular chaperone. Alternatively spliced variants encoding different isoforms have been reported, but their biological validity has not been determined.

## Verified picture



Western blot analysis with FKBP10 antibody  
diluted at 1:1000