

Anti-CYBB Rabbit Polyclonal Antibody

Cat:AC51656

Basic information

Source: Rabbit

Swiss Prot: P04839

Species reactivity: Human Mouse Rat

Gene ID:1536

Isotype: IgG

Tested applications: WB IHC IF

Purification: Affinity purification

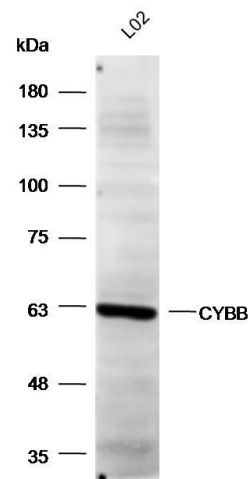
Immunogen:A synthetic peptide of human CYBB

MW(kDa):65kDa

Storage: Store at -20°C. Avoid freeze / thaw cycles.
Buffer: PBS with 0.02% sodium azide, 50% glycerol, pH7.3.

Background:

Cytochrome b (-245) is composed of cytochrome b alpha (CYBA) and beta (CYBB) chain. It has been proposed as a primary component of the microbicidal oxidase system of phagocytes. CYBB deficiency is one of five described biochemical defects associated with chronic granulomatous disease (CGD). In this disorder, there is decreased activity of phagocyte NADPH oxidase; neutrophils are able to phagocytize bacteria but cannot kill them in the phagocytic vacuoles. The cause of the killing defect is an inability to increase the cell's respiration and consequent failure to deliver activated oxygen into the phagocytic vacuole.



Western blot analysis with Anti-CYBB Rabbit Polyclonal
Antibody diluted at 1:1,000