

Anti-SRSF1 Polyclonal Antibody

Cat: AC51665

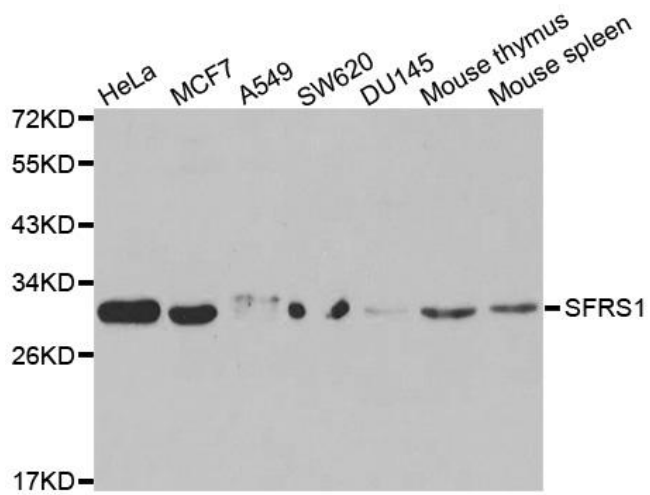
Summary:

- 【Product name】** : Anti-SRSF1 antibody **【Source】** : Rabbit
- 【Isotype】** : IgG **【Species reactivity】** : Human Mouse Rat
- 【Swiss Prot】** : Q07955 **【Gene ID】** : 6426
- 【Calculated】** : MW:28kDa **【Observed】** : MW:30kDa
- 【Purification】** : Affinity purification
- 【Tested applications】** : WB IHC IF
- 【Recommended dilution】** : WB 1:500-2000. IHC 1:50-200. IF 1:50-200.
- 【WB Positive sample】** : HeLa,MCF7,A549,SW620,DU145,Mouse thymus,Mouse spleen
- 【IHC Positive sample】** : Rat lung tissue
- 【Subcellular location】** : Cytoplasm Nucleus speckle
- 【Immunogen】** : Recombinant Protein of human SRSF1
- 【Storage】** : Shipped at 4°C. Upon delivery aliquot and store at -20°C

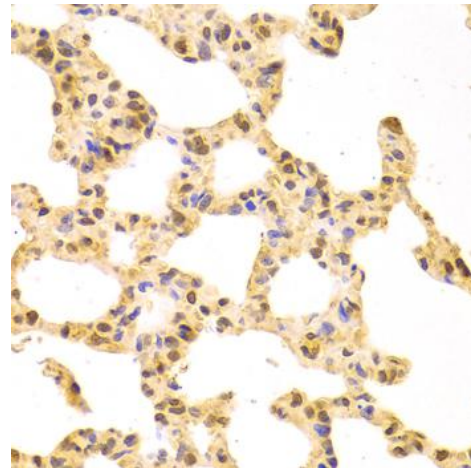
Background:

This gene encodes a member of the arginine/serine-rich splicing factor protein family. The encoded protein can either activate or repress splicing, depending on its phosphorylation state and its interaction partners. Multiple transcript variants have been found for this gene. There is a pseudogene of this gene on chromosome 13.

Verified picture



Western blot analysis with SRSF1 antibody diluted at 1:1000



Immunohistochemistry of paraffin-embedded Rat lung tissue with SRSF1 antibody diluted at 1:100