

Anti-CD3E Rabbit Polyclonal Antibody

Cat:AC51716

Basic information

Source: Rabbit

Swiss Prot: P07766

Species reactivity: Human,Mouse,Rat

Gene ID:916

Isotype: IgG

Tested applications: WB,IHC,IP

Purification: Affinity purification

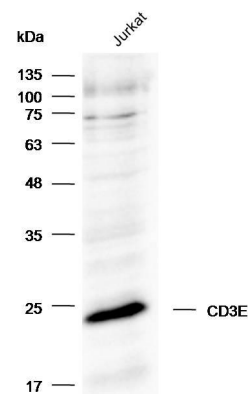
Immunogen: Recombinant protein of human CD3E

MW(kDa):23kDa

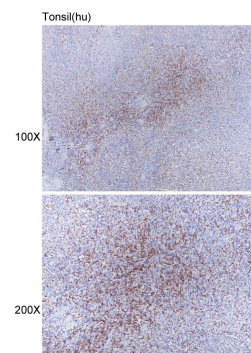
Storage: Store at -20°C. Avoid freeze / thaw cycles.
Buffer: PBS with 0.02% sodium azide, 50% glycerol, pH7.3.

Background:

The protein encoded by this gene is the CD3-epsilon polypeptide, which together with CD3-gamma, -delta and -zeta, and the T-cell receptor alpha/beta and gamma/delta heterodimers, forms the T-cell receptor-CD3 complex. This complex plays an important role in coupling antigen recognition to several intracellular signal-transduction pathways. The genes encoding the epsilon, gamma and delta polypeptides are located in the same cluster on chromosome 11. The epsilon polypeptide plays an essential role in T-cell development. Defects in this gene cause immunodeficiency. This gene has also been linked to a susceptibility to type I diabetes in women.



Western blot analysis with Anti- CD3E Rabbit Polyclonal Antibody diluted at 1:1,000



Immunohistochemistry of paraffin-embedded tonsil(hu) using Anti- CD3E Rabbit Polyclonal Antibody at dilution of 1:100 (x100 lens、 x200lens).