

Anti-C1QA Polyclonal Antibody

Cat: AC51757

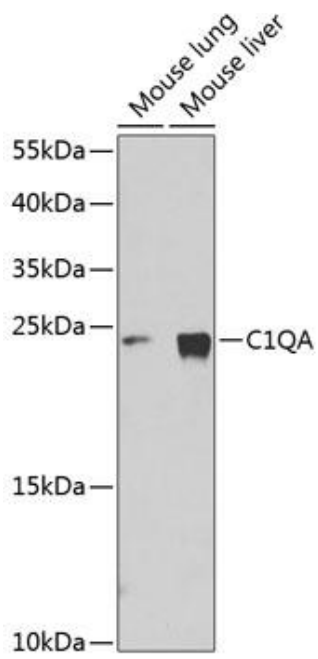
Summary:

- | | |
|---|-------------------------------------|
| 【Product name】 : Anti-C1QA antibody | 【Source】 : Rabbit |
| 【Isotype】 : IgG | 【Species reactivity】 : Mouse |
| 【Swiss Prot】 : P02745 | 【Gene ID】 : 712 |
| 【Calculated】 : MW:26kDa | 【Observed】 : MW:23kDa |
| 【Purification】 : Affinity purification | |
| 【Tested applications】 : WB | |
| 【Recommended dilution】 : WB 1:500-2000 | |
| 【WB Positive sample】 : Mouse lung,Mouse liver | |
| 【Subcellular location】 : Secreted | |
| 【Immunogen】 : Recombinant protein of human C1QA | |
| 【Storage】 : Shipped at 4°C. Upon delivery aliquot and store at -20°C | |

Background:

This gene encodes a major constituent of the human complement subcomponent C1q. C1q associates with C1r and C1s in order to yield the first component of the serum complement system. Deficiency of C1q has been associated with lupus erythematosus and glomerulonephritis. C1q is composed of 18 polypeptide chains: six A-chains, six B-chains, and six C-chains. Each chain contains a collagen-like region located near the N terminus and a C-terminal globular region. The A-, B-, and C-chains are arranged in the order A-C-B on chromosome 1. This gene encodes the A-chain polypeptide of human complement subcomponent C1q.

Verified picture



Western blot analysis with C1QA antibody diluted at 1:1000; Lane: Mouse lung, Mouse liver.