

## Anti-POLR2F Polyclonal Antibody

Cat: AC51760

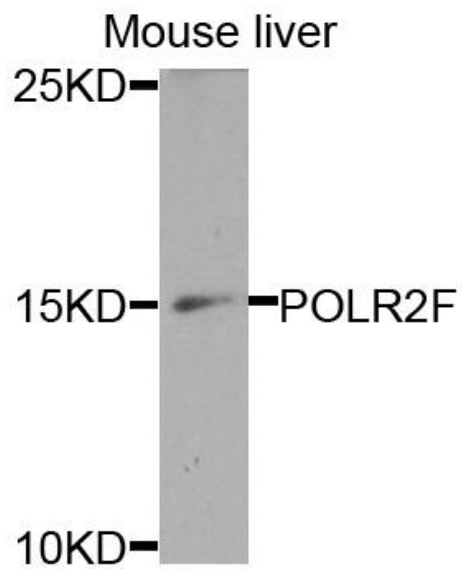
### Summary:

- |   |                                     |
|---|-------------------------------------|
| <b>【Product name】</b> : Anti-POLR2F antibody                                | <b>【Source】</b> : Rabbit            |
| <b>【Isotype】</b> : IgG  | <b>【Species reactivity】</b> : Human |
| <b>【Swiss Prot】</b> : P61218  | <b>【Gene ID】</b> : 5435             |
| <b>【Calculated】</b> : MW:14kDa  | <b>【Observed】</b> : MW:15kDa        |
| <b>【Purification】</b> : Affinity purification                               |                                     |
| <b>【Tested applications】</b> : WB IF  |                                     |
| <b>【Recommended dilution】</b> : WB 1:500-2000. IF 1:50-100.                 |                                     |
| <b>【WB Positive sample】</b> : Mouse liver                                   |                                     |
| <b>【Subcellular location】</b> : Nucleus                                     |                                     |
| <b>【Immunogen】</b> : Recombinant protein of human POLR2F                    |                                     |
| <b>【Storage】</b> : Shipped at 4°C. Upon delivery aliquot and store at -20°C |                                     |

### Background:

This gene encodes the sixth largest subunit of RNA polymerase II, the polymerase responsible for synthesizing messenger RNA in eukaryotes. In yeast, this polymerase subunit, in combination with at least two other subunits, forms a structure that stabilizes the transcribing polymerase on the DNA template. Alternative splicing results in multiple transcript variants.

## Verified picture



Western blot analysis with POLR2F antibody  
diluted at 1:1000