

Anti-HCFC1 Polyclonal Antibody

Cat: AC51773

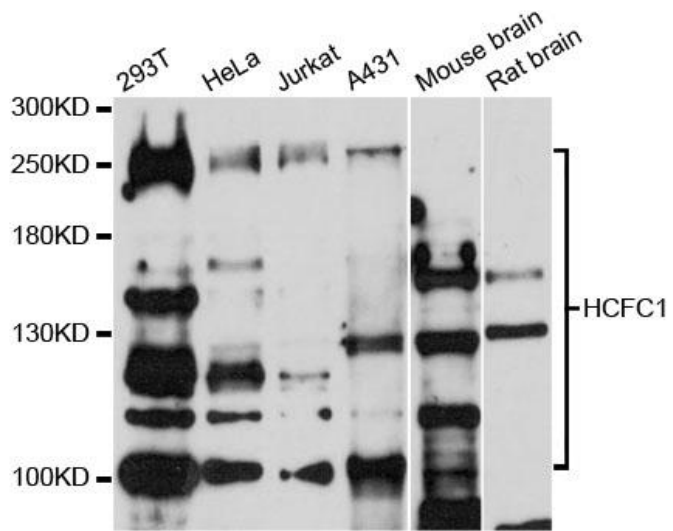
Summary:

- | | |
|---|---|
| 【Product name】 : Anti-HCFC1 antibody | 【Source】 : Rabbit |
| 【Isotype】 : IgG | 【Species reactivity】 : Human Mouse Rat |
| 【Swiss Prot】 : P51610 | 【Gene ID】 : 3054 |
| 【Calculated】 : MW:209kDa | 【Observed】 : MW:100-250kDa |
| 【Purification】 : Affinity purification | |
| 【Tested applications】 : WB | |
| 【Recommended dilution】 : WB 1:500-2000. | |
| 【WB Positive sample】 : 293T,HeLa,Jurkat,A431,Mouse brain,Rat brain | |
| 【Subcellular location】 : Cytoplasm Nucleus | |
| 【Immunogen】 : Recombinant protein of human HCFC1 | |
| 【Storage】 : Shipped at 4°C. Upon delivery aliquot and store at -20°C | |

Background:

This gene is a member of the host cell factor family and encodes a protein with five Kelch repeats, a fibronectin-like motif, and six HCF repeats, each of which contains a highly specific cleavage signal. This nuclear coactivator is proteolytically cleaved at one of the six possible sites, resulting in the creation of an N-terminal chain and the corresponding C-terminal chain. The final form of this protein consists of noncovalently bound N- and C-terminal chains. The protein is involved in control of the cell cycle and transcriptional regulation during herpes simplex virus infection. Alternatively spliced variants which encode different protein isoforms have been described; however, not all variants have been fully characterized.

Verified picture



Western blot analysis with HCFC1 antibody
diluted at 1:1000