

# Anti-BUB1 Rabbit Polyclonal Antibody

Cat:AC51821

## Basic information

**Source:** Rabbit

**Swiss Prot:**O43683

**Species reactivity:** Human Mouse Rat

**Gene ID:**699

**Isotype:** IgG

**Tested applications:** WB IHC

**Purification:** Affinity purification

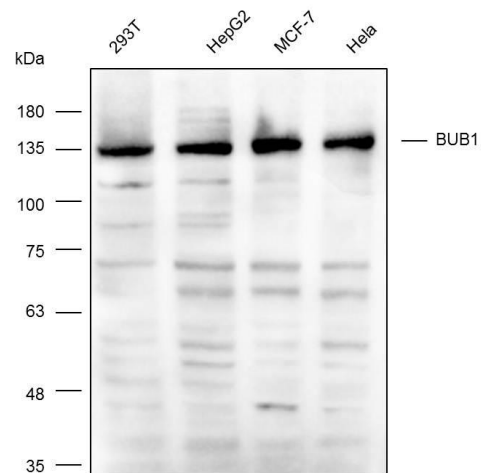
**Immunogen:**Recombinant protein of human BUB1

**MW(kDa):**122kDa

**Storage:** Store at -20°C. Avoid freeze / thaw cycles.  
Buffer: PBS with 0.02% sodium azide, 50% glycerol, pH7.3.

### Background:

This gene encodes a serine/threonine-protein kinase that play a central role in mitosis. The encoded protein functions in part by phosphorylating members of the mitotic checkpoint complex and activating the spindle checkpoint. This protein also plays a role in inhibiting the activation of the anaphase promoting complex/cyclosome. This protein may also function in the DNA damage response. Mutations in this gene have been associated with aneuploidy and several forms of cancer. Alternate splicing results in multiple transcript variants.



Western blot analysis with Anti-BUB1 Rabbit Polyclonal Antibody diluted at 1:1,000