

Anti-RAB27A Rabbit Polyclonal Antibody

Cat:AC51826

Basic information

Source: Rabbit

Swiss Prot:P51159

Species reactivity: Human Mouse

Gene ID:5873

Isotype: IgG

Tested applications: WB,IHC,IF

Purification: Affinity purification

Immunogen:Recombinant protein of human RAB27A

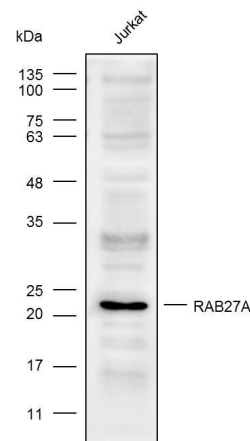
MW(kDa):25kDa

Storage: Store at -20°C. Avoid freeze / thaw cycles.

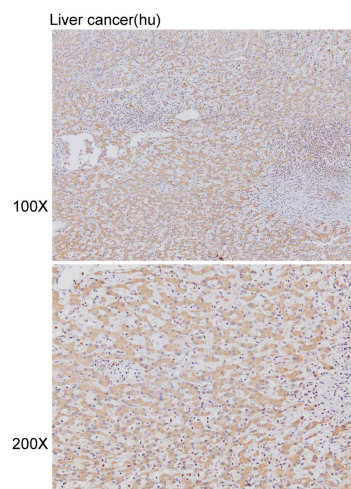
Buffer: PBS with 0.02% sodium azide, 50% glycerol, pH7.3.

Background:

The protein encoded by this gene belongs to the small GTPase superfamily, Rab family. The protein is membrane-bound and may be involved in protein transport and small GTPase mediated signal transduction. Mutations in this gene are associated with Griscelli syndrome type 2. Alternative splicing occurs at this locus and four transcript variants encoding the same protein have been identified.



Western blot analysis with RAB27A diluted at 1:1,000



Immunohistochemistry of paraffin-embedded liver cancer(hu) using RAB27A antibody at dilution of 1:100.