

Anti-MCM6 Rabbit Polyclonal Antibody

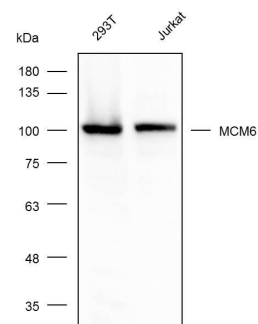
Cat:AC51842

Basic information

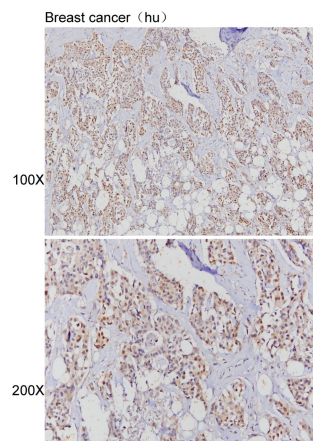
Source: Rabbit**Swiss Prot:**Q14566**Species reactivity:** Human,Mouse,Rat**Gene ID:**4175**Isotype:** IgG**Tested applications:** WB,IHC,IF**Purification:** Affinity purification**Immunogen:**Recombinant protein of human MCM6**MW(kDa):**93kDa**Storage:** Store at -20°C. Avoid freeze / thaw cycles.
Buffer: PBS with 0.02% sodium azide, 50% glycerol, pH7.3.

Background:

The protein encoded by this gene is one of the highly conserved mini-chromosome maintenance proteins (MCM) that are essential for the initiation of eukaryotic genome replication. The hexameric protein complex formed by the MCM proteins is a key component of the pre-replication complex (pre_RC) and may be involved in the formation of replication forks and in the recruitment of other DNA replication related proteins. The MCM complex consisting of this protein and MCM2, 4 and 7 proteins possesses DNA helicase activity, and may act as a DNA unwinding enzyme. The phosphorylation of the complex by CDC2 kinase reduces the helicase activity, suggesting a role in the regulation of DNA replication. Single nucleotide polymorphisms in the intron regions of this gene are associated with differential transcriptional activation of the promoter of the neighboring lactase gene and, thereby, influence lactose intolerance in early adulthood.



Western blot analysis with MCM6 diluted at 1:1,000



Immunohistochemistry of paraffin-embedded breast cancer (hu) using MCM6 antibody at dilution of 1:100 (x100 lens, x200 lens).