

Anti-PGK1 Rabbit Polyclonal Antibody

Cat:AC51848

Basic information

Source: Rabbit

Swiss Prot:P00558

Species reactivity: Human Mouse Rat

Gene ID:5230

Isotype: IgG

Tested applications: WB IHC IF

Purification: Affinity purification

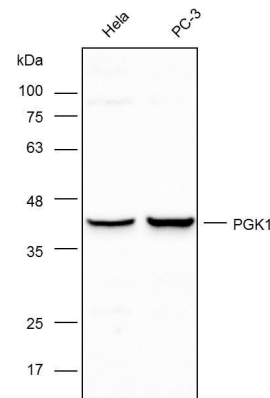
Immunogen:Recombinant protein of human PGK1

MW(kDa):41/45kDa

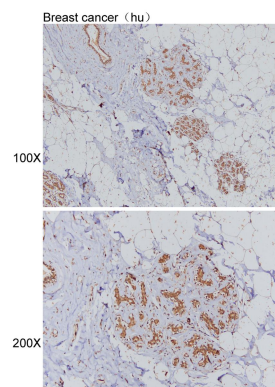
Storage: Store at -20°C. Avoid freeze / thaw cycles.
Buffer: PBS with 0.02% sodium azide, 50% glycerol, pH7.3.

Background:

The protein encoded by this gene is a glycolytic enzyme that catalyzes the conversion of 1,3-diphosphoglycerate to 3-phosphoglycerate. The encoded protein may also act as a cofactor for polymerase alpha. Additionally, this protein is secreted by tumor cells where it participates in angiogenesis by functioning to reduce disulfide bonds in the serine protease, plasmin, which consequently leads to the release of the tumor blood vessel inhibitor angiostatin. The encoded protein has been identified as a moonlighting protein based on its ability to perform mechanistically distinct functions. Deficiency of the enzyme is associated with a wide range of clinical phenotypes hemolytic anemia and neurological impairment. Pseudogenes of this gene have been defined on chromosomes 19, 21 and the X chromosome.



Western blot analysis with Anti-PGK1 Rabbit Polyclonal Antibody diluted at 1:1,000



Immunohistochemistry of paraffin-embedded breast cancer (hu) using Anti-PGK1 Rabbit Polyclonal Antibody at dilution of 1:100 (x100 lens、x200 lens).