

Anti-VCL Polyclonal Antibody

Summary:

Cat: AC59202

[Product name] : VCL

[Source] : Rabbit

[Purification] : Octanoic acid-ammonium sulfate precipitation

[Isotype] : IgG

[Gene ID] : 7414

[Swiss Prot] : P18206

[Calculated] : 124/117/25kDa

[Species reactivity] : Mouse ; Human

[Tested applications] : IHC ; WB

[Recommended dilution] : WB 1:5000-8000. IHC 1:100-300.

[Subcellular location] : Cell junction Cell membrane Cytoplasm Cytoplasmic side Peripheral membrane protein adherens junction cytoskeleton focal adhesion

[Immunogen] : A synthetic peptide of human VCL

[Public Immunogen Range] : 65-115/1134aa

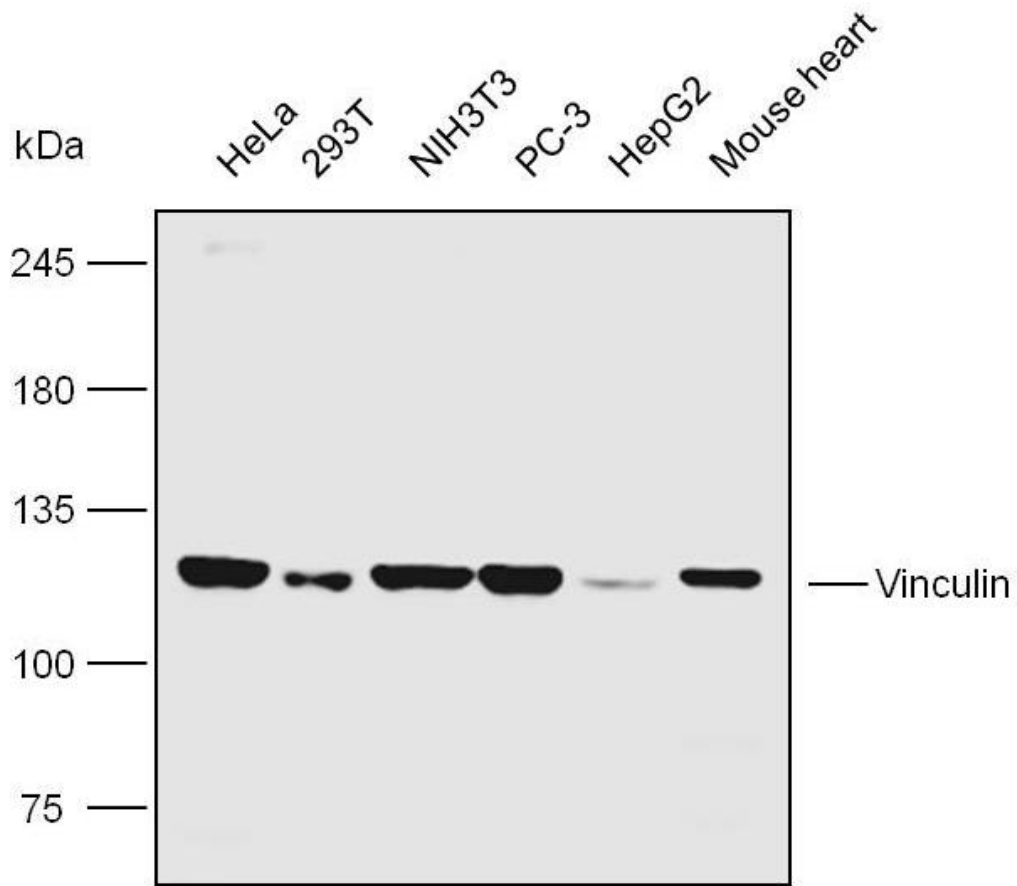
Background:

Actin filament (F-actin)-binding protein involved in cell-matrix adhesion and cell-cell adhesion. Regulates cell-surface E-cadherin expression and potentiates mechanosensing by the E-cadherin complex. May also play important roles in cell morphology and locomotion.

产品仅供科研!



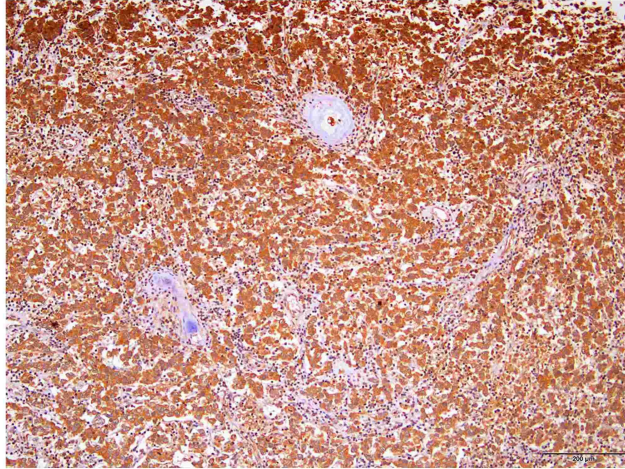
Verified picture:



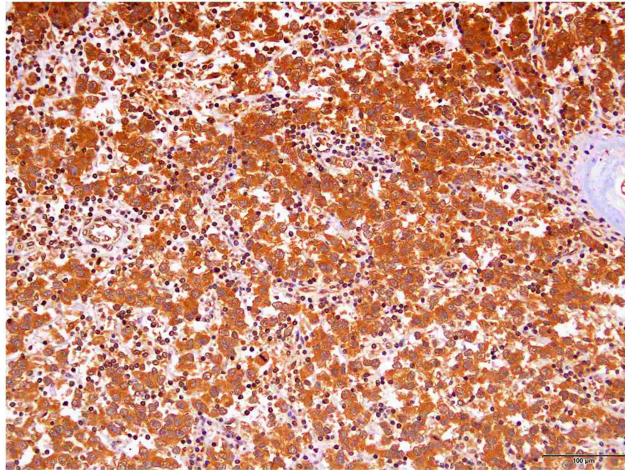
Western blot analysis with VCL antibody diluted at 1:6000;
Lane: HeLa,293T,NIH/3T3,PC-3M-IE8,HepG2,Mouse heart.

Testis cancer (hu)

100x



200x



Immunohistochemistry of paraffin-embedded Human testis cancer with Vinculin antibody diluted at 1:200.