

Appearance

绿黄色粉末

Purity

97%

Structure

符合结构

Hi, 欢迎来到吉至生化, 品质好, 服务好! 热线: 400-900-4166

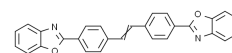


上海吉至生化科技有限公司
Shanghai Acmec Biochemical Technology Co.,Ltd.

Product Specifications

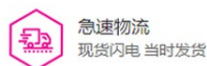
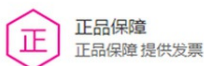
Structure:

| | |
|---------|----------------------------------|
| Name | 1,2-双(4-(苯并[d]恶唑-2-基)苯基)乙烯 |
| EN Name | 4,4'-Bis(2-benzoxazolyl)stilbene |
| Catalog | B37060 |
| CAS | 1533-45-5 |
| M.F. | C H N O |
| M.W. | 414.46 |



| Test | Norm |
|------------|-------|
| Appearance | 绿黄色粉末 |
| Purity | 97% |
| Structure | 符合结构 |

Shanghai Acmec Biochemical Co.,Ltd.
1301 Rm,NO.1,1588 Wangyuan South Rd,Fengxian,Shanghai



产品仅供科研!

www.acmec-e.com 400-900-4166