

Appearance
Red Crystalline Powder

Assay
95%

Hi, 欢迎来到吉至生化, 品质好, 服务好! 热线: 400-900-4166

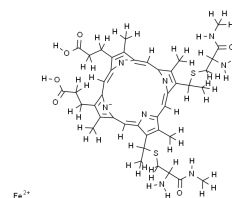


上海吉至生化科技有限公司
Shanghai Acmec Biochemical Technology Co.,Ltd.

Product Specifications

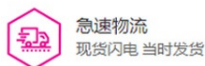
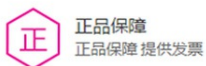
Structure:

Name	细胞色素C
EN Name	Cytochrome C
Catalog	C23523
CAS	9007-43-6
M.F.	C H FEN O S
M.W.	12327.00



Test	Norm
Appearance	Red Crystalline Powder
Assay	95%

Shanghai Acmec Biochemical Co.,Ltd.
1301 Rm,NO.1,1588 Wangyuan South Rd,Fengxian,Shanghai



产品仅供科研!



www.acmec-e.com



400-900-4166