

Appearance

白色至米黄色粉末

Assay

≥98%

Solubility

50mg/ml,HCl 无色、澄清

Hi, 欢迎来到吉至生化, 品质好, 服务好! 热线: 400-900-4166

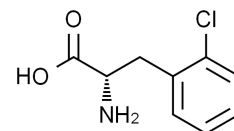


上海吉至生化科技有限公司
Shanghai Acmec Biochemical Technology Co.,Ltd.

Product Specifications

Structure:

Name	L-2-氯苯丙氨酸
EN Name	2-Chloro-L-Phenylalanine
Catalog	C63461
CAS	103616-89-3
M.F.	C H CINO
M.W.	199.63



Test	Norm
Appearance	白色至米黄色粉末
Assay	≥98%
Solubility	50mg/ml,HCl 无色、澄清

Shanghai Acmec Biochemical Co.,Ltd.
1301 Rm,NO.1,1588 Wangyuan South Rd,Fengxian,Shanghai



产品仅供科研!

www.acmec-e.com 400-900-4166