

Purity

98%

Refractive Index N20/D

1.494-1.496

Specific Gravity (20/20°C)

0.862-0.865

Infrared Spectrum

Conforms to Structure

Hi, 欢迎来到吉至生化, 品质好, 服务好! 热线: 400-900-4166

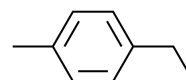


上海吉至生化科技有限公司
Shanghai Acmec Biochemical Technology Co.,Ltd.

Product Specifications

Structure:

Name	4-乙基甲苯
EN Name	4-Ethyltoluene
Catalog	E45680
CAS	622-96-8
M.F.	C H
M.W.	120.19



Test	Norm
Purity	98%
Refractive Index N20/D	1.494-1.496
Specific Gravity (20/20°C)	0.862-0.865
Infrared Spectrum	Conforms to Structure

Shanghai Acmec Biochemical Co.,Ltd.
1301 Rm,NO.1,1588 Wangyuan South Rd,Fengxian,Shanghai



客服电话
400-900-4166



正品保障
正品保障 提供发票



急速物流
现货闪电 当时发货



售后无忧
不满意退货

产品仅供科研!



www.acmec-e.com



400-900-4166