

Appearance

White Crystalline Powder

Identification

HPLC RT

Specific Rotation

-15.5° to -17.5°

Heavy Metals(Pb)

≤10ppm

Sulfate

≤300ppm

Chloride

≤200ppm

Ammonium

≤200ppm

IRon

≤10ppm

Arsenic

≤1ppm

Loss On Drying

≤0.5%

Residue On Ignition

≤0.1%

Assay

98%

Related Substances

Gross Contamination≤2%

Related Substances

GSSG≤1.5%

Hi, 欢迎来到吉至生化, 品质好, 服务好! 热线: 400-900-4166

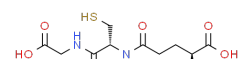


上海吉至生化科技有限公司  
Shanghai Acmec Biochemical Technology Co.,Ltd.

## Product Specifications

Structure:

Name	还原型谷胱甘肽
EN Name	L-Glutathione reduced
Catalog	L12180



CAS 70-18-8

o n NH<sub>2</sub>

M. F. C10H17N3O6S

M. W. 307.3235

Test	Norm
Appearance	White Crystalline Powder
Identification	HPLC RT
Specific Rotation	-15.5° to -17.5°
Heavy Metals (Pb)	≤10ppm
Sulfate	≤300ppm
Chloride	≤200ppm
Ammonium	≤200ppm
IRon	≤10ppm
Arsenic	≤1ppm
Loss On Drying	≤0.5%
Residue On Ignition	≤0.1%
Assay	98%
Related Substances	Gross Contamination≤2%
Related Substances	GSSG≤1.5%

Shanghai AcmeC Biochemical Co., Ltd.  
1301 Rm, NO. 1, 1588 Wangyuan South Rd, Fengxian, Shanghai



客服电话  
400-900-4166



正品保障  
正品保障 提供发票



急速物流  
现货闪电 当时发货



售后无忧  
不满意退货

产品仅供科研!



www.acmec-e.com



400-900-4166